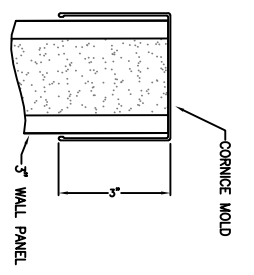
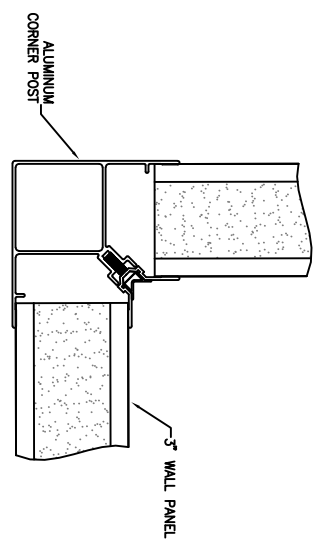


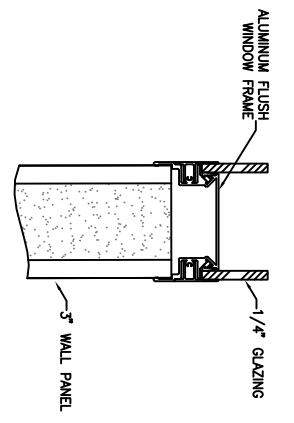
A1 B1 C1 D1 E1 F1 G1 H1



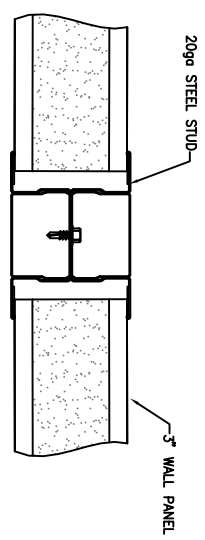
A
1 CORNICHE MOLD DETAIL



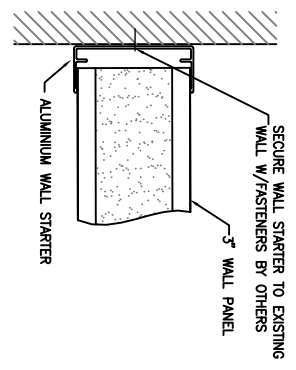
B
1 CORNER POST DETAIL



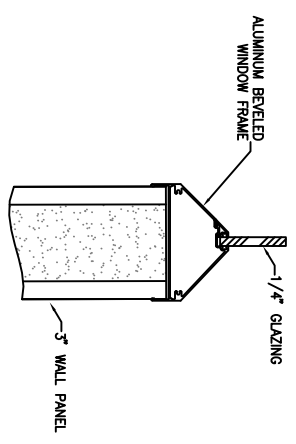
C
1 FLUSH WINDOW DETAIL



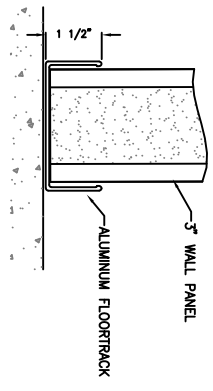
D
1 STUD POST DETAIL



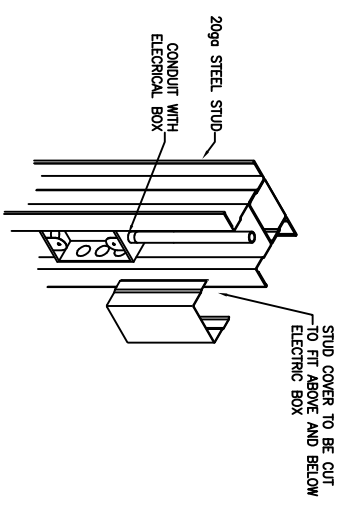
E
1 WALL STARTER DETAIL



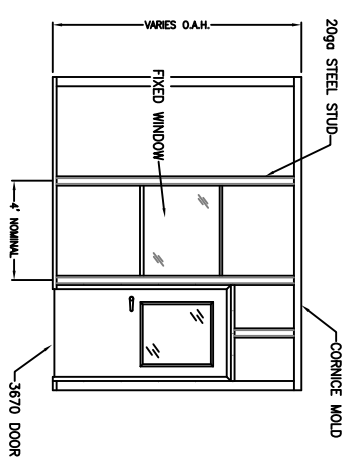
F
1 BEVELED WINDOW DETAIL



G
1 FLOOR TRACK DETAIL



H
1 STEEL STUD ISO



J
1 OMNIFLEX 300 WALL ELEVATION

OMNIFLEX 300

OMNIFLEX 300 STANDARD DETAILS		PORTAFAB CORPORATION		REV.	DESCRIPTION
HOSPITAL WALLS		18080 CHESTERFIELD AIRPORT ROAD, CHESTERFIELD, MO 63005			
P.O.		email: engineering@portafab.com (800) 325-3781			
<small>These documents were developed by PORTA-FAB Corporation. The contents of these documents are the property of PORTA-FAB Corporation. They are not to be copied or otherwise used without the express written permission of PORTA-FAB Corporation.</small>					
DRAWN BY: LT	DATE: 03/2020				
CHECKED BY: SHP	DATE:				
SCALE: nbs	REVISED:				
ORDER NO.					
SHEET NO. 10F 1					

SUPPLIER MAKES NO REPRESENTATION THAT THE BUILDING OR COMPONENT DEPICTED HEREIN COMPLIES WITH APPLICABLE CODE OR ORDINANCES; PURCHASER SHOULD VERIFY COMPLIANCE WITH SUCH CODES AND ORDINANCES.